

PV in



**LCH Planning and Development  
Consultants Limited**

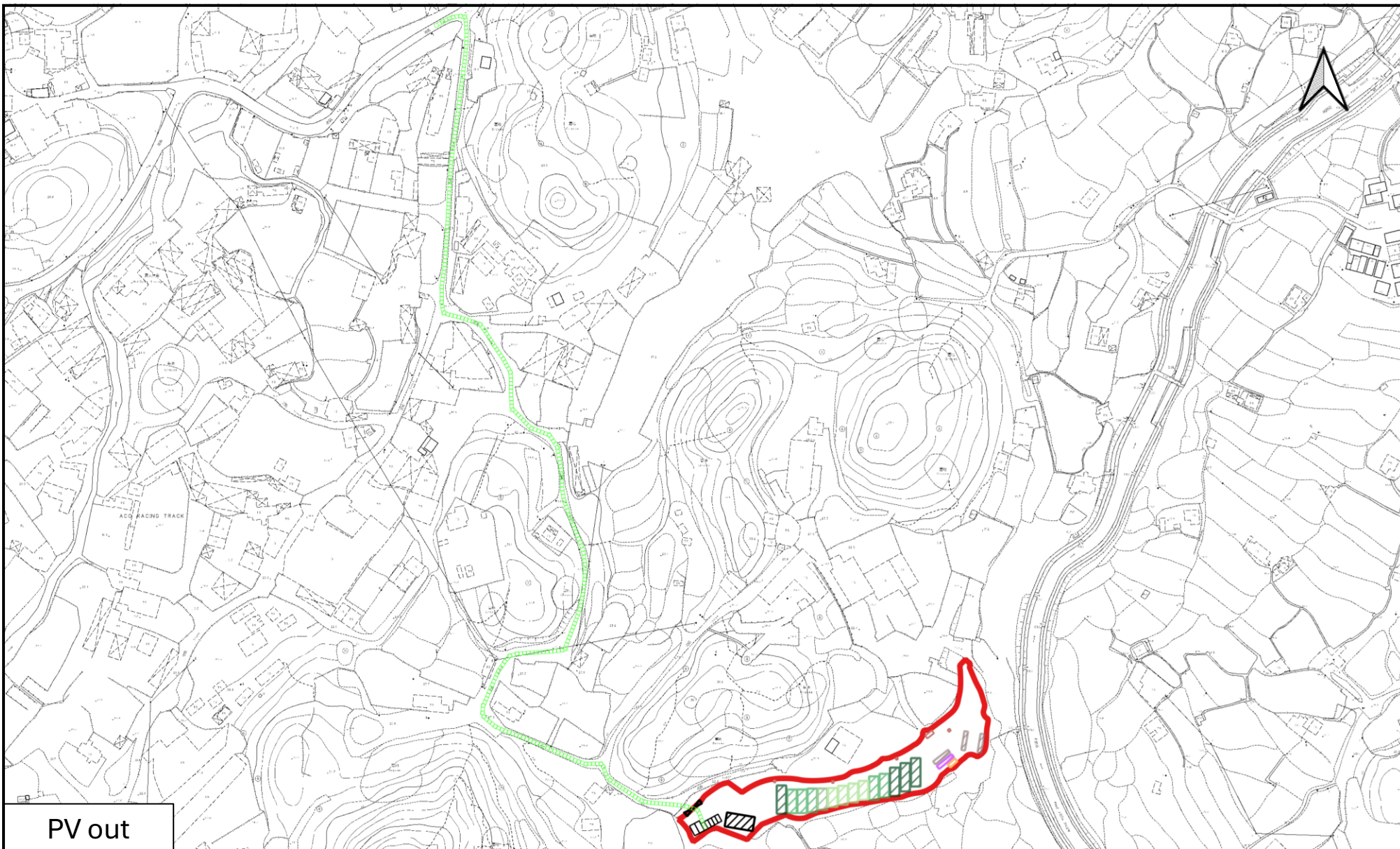
**Annex 2 : Swept Path Analysis**

*(For reference only. Not to scale.)*

Section 16 Application for Proposed Temporary Mountain Search and Rescue Training Centre and Ancillary Facilities and Associated Filling of Land for a Period of 3 Years at Lot Nos. 611 (Part) and 682 (Part) in D.D. 84, Hung Lung Hang, New Territories

*(Source: HK GEODATA STORE & Town Planning Board, HKSAR Government)*





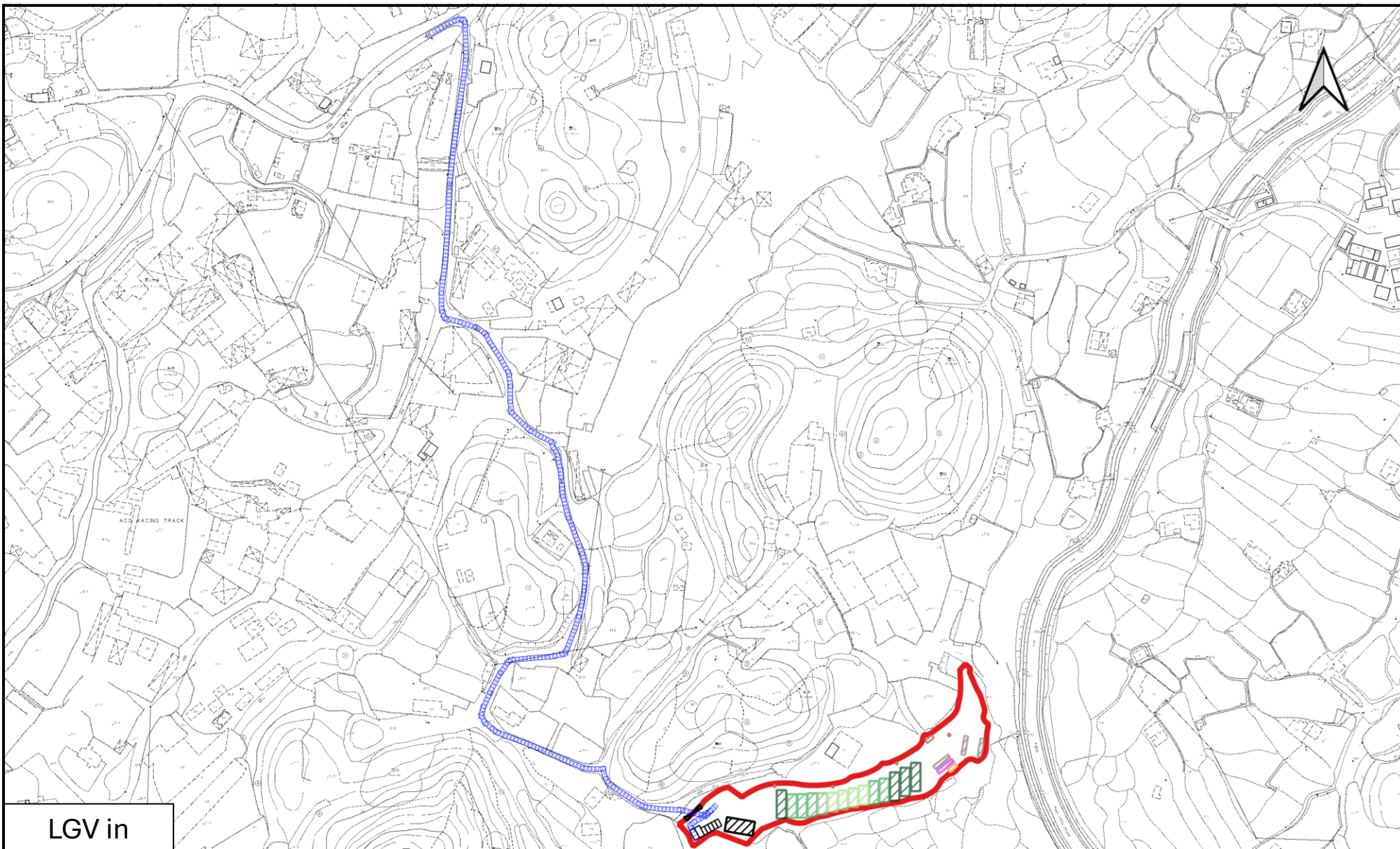
**LCH Planning and Development  
Consultants Limited**

**Annex 2 : Swept Path Analysis**

*(For reference only. Not to scale.)*

Section 16 Application for Proposed Temporary Mountain Search and Rescue Training Centre and Ancillary Facilities and Associated Filling of Land for a Period of 3 Years at Lot Nos. 611 (Part) and 682 (Part) in D.D. 84, Hung Lung Hang, New Territories

*(Source: HK GEODATA STORE & Town Planning Board, HKSAR Government)*



**LCH Planning and Development  
Consultants Limited**

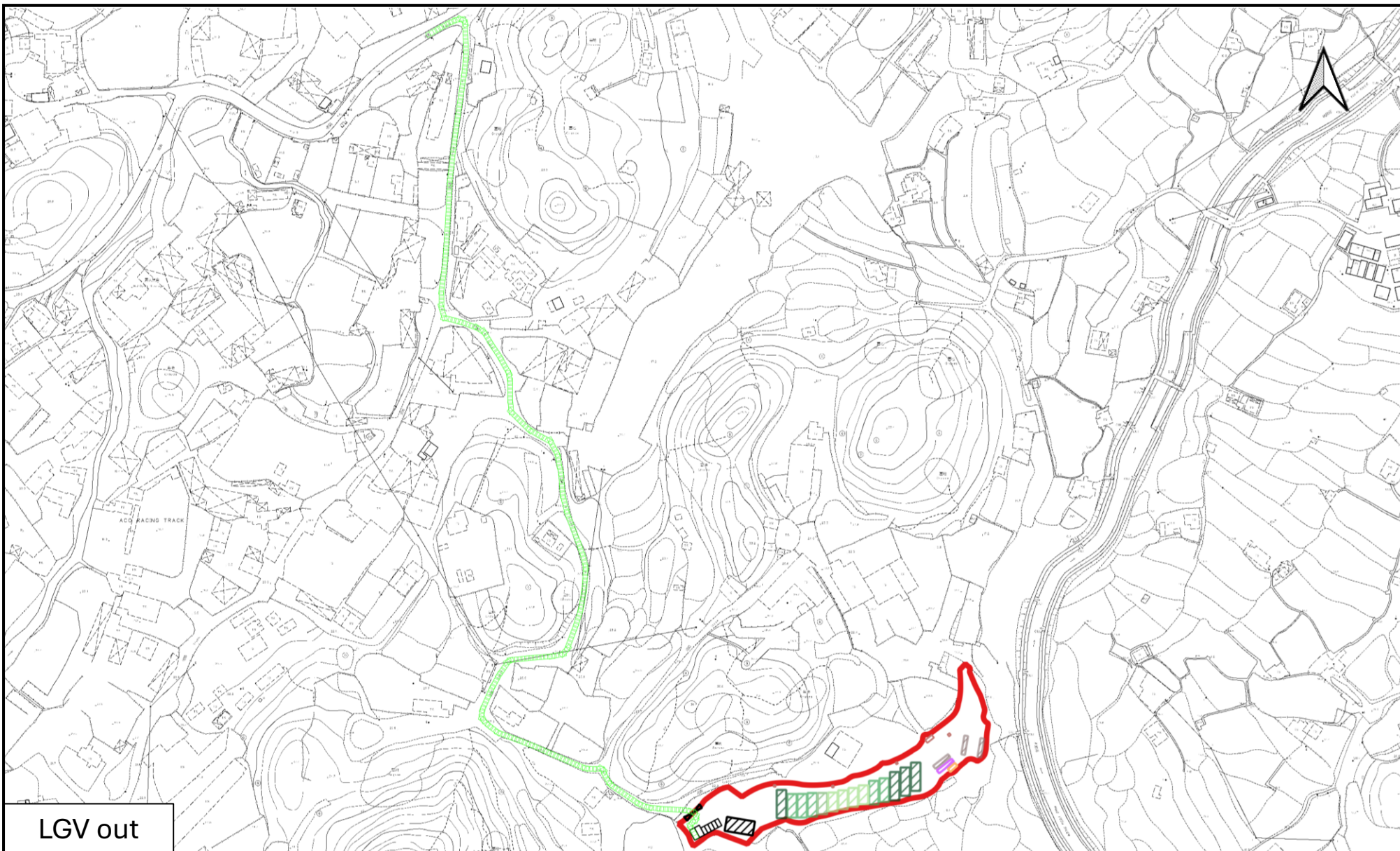
**Annex 2 : Swept Path Analysis**

*(For reference only. Not to scale.)*

Section 16 Application for Proposed Temporary Mountain Search and Rescue Training Centre and Ancillary Facilities and Associated Filling of Land for a Period of 3 Years at Lot Nos. 611 (Part) and 682 (Part) in D.D. 84, Hung Lung Hang, New Territories

*(Source: HK GEODATA STORE & Town Planning Board, HKSAR Government)*





**LCH Planning and Development  
Consultants Limited**

**Annex 2 : Swept Path Analysis**

*(For reference only. Not to scale.)*

Section 16 Application for Proposed Temporary Mountain Search and Rescue Training Centre and Ancillary Facilities and Associated Filling of Land for a Period of 3 Years at Lot Nos. 611 (Part) and 682 (Part) in D.D. 84, Hung Lung Hang, New Territories

*(Source: HK GEODATA STORE & Town Planning Board, HKSAR Government)*